



## Series 94 Electric Actuators

### Standard Features (Sizes 1-1/2" - 4")

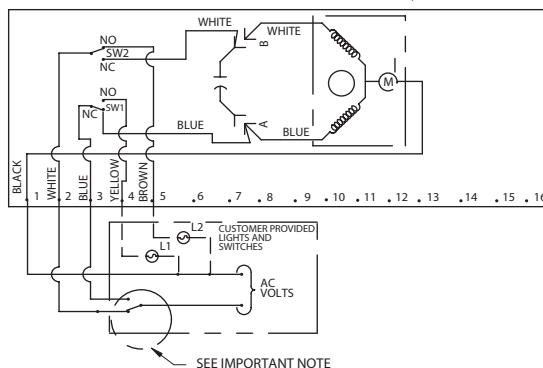
- Brushless, capacitor-run motors (AC models)
- Integral thermal overload protection with auto-reset (AC models)
- Permanently lubricated gear train
- Duty cycle 100% for high cycle applications
- Corrosion-proof/weatherproof Type 4X thermoplastic housing with stainless steel trim
- ISO bolt circle
- Two 1/2" NPT conduit ports prevent interference between control and power signals
- Low in cost
- Declutchable manual override
- Standard travel-stop limit switches can simultaneously be used for indicator lights
- Visible position indicator

### Options

- Failsafe battery pack
- Extra limit switches
- Feedback potentiometer
- Heater and thermostat (to -40° F)
- Positioner: 4-20mA or 0-10 VDC input signal
- 4-20mA output position transmitter
- Voltages: 220 VAC, 24 VAC, 12 VAC, 24 VDC, 12 VDC
- Mechanical brake eliminates seating oscillation

### AC Wiring (For 115 VAC and 220 VAC only)

ACTUATOR SHOWN IN COUNTER-CLOCKWISE EXTREME OF TRAVEL, OR "OPEN" POSITION



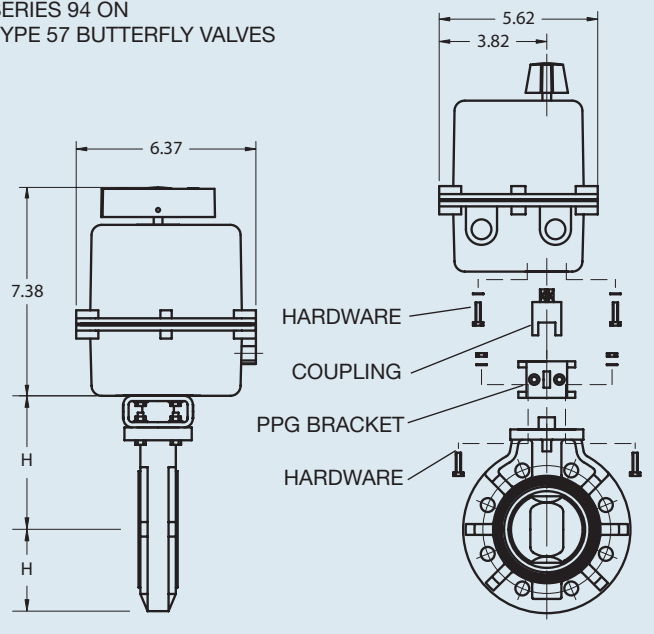
### Specifications

**Series 94:** Motor Type - Reversing, 1/4 turn, single phase  
 Sizes - A94 for sizes 1-1/2" - 2"  
 B94 for sizes 2-1/2" - 4"  
 Torque - 150 to 300 in-lbs  
 Voltage - 120 VAC, 50/60 Hz  
 Amp Draw - For A94: .5 Amps  
 For B94: .80 Amps  
 Max Ambient Temp - 150° F  
 Switches - Two single pole, double throw (15 Amp rating)



UL - 508  
Listed

SERIES 94 ON TYPE 57 BUTTERFLY VALVES



Duty cycle shown above is for 115 Vac at ambient temperature.

### Engineering Data

Actuator Model	Torque (in-lbs)	Duty Cycle	Cycle Time (sec)	Weight (lbs)	Amp Draw					
					115 Vac	220 Vac	24 Vac	12 Vac	24 Vdc	12 Vdc
A94	150	100	5	3.5	0.50	0.4	4.0	2.0	4.0	2.0
B94	300	75	5	3.5	0.80	0.6	4.0	2.0	4.0	2.0

### Dimensions/ Actuator Model

NOMINAL SIZE		MODEL	H	H1
INCHES	mm			
1 1/2	40	A94	5.51	2.95
2	50	A94	5.75	3.27
2 1/2	65	B94	6.18	3.66
3	80	B94	6.46	3.94
4	100	B94	7.16	4.53

- NOTE TO WIRING DIAGRAM:**
1. EACH ACTUATOR MUST BE POWERED THROUGH ITS OWN INDIVIDUAL SWITCH CONTACTS TO AVOID CROSS FEED.
  2. WIRING AS SHOWN IS FOR A94 AND B94 MOTOR.
  3. MOTOR HAS A THERMAL PROTECTOR AS SHOWN BY (M) IN DIAGRAM. (115 AND 220 VAC MODEL).
  4. IF 115 & 220 VAC MODELS ARE PLC DRIVEN, OUTPUT CONTACTS OF PLC SHOULD BE RATED AT A MINIMUM OF 1.5 TIMES REQUIRED INPUT VOLTAGE OF ACTUATOR.

Authorized Distributor:

Aetna Plastics Corp. 1702 St. Clair Ave. Cleveland, Ohio 44114 • Tel: 800-634-3074  
 216-781-4421 • Fax: 216-781-4474 • sales@aetnaplastics.com • www.aetnaplastics.com