

# Type 567 Large Diameter Butterfly Valve 14"-24"

## Standard Features

- **Size**  
14"-24"
- **Body**  
Polypropylene compatible with ANSI and DIN flanges
- **Wetted Materials**  
Polypropylene, EPDM, or FPM
- **Disc**  
Polypropylene
- **Stem**  
304 or 316 Stainless Steel (non-exposed)
- **Seal**  
EPDM or FPM
- **Pressure**  
14" & 16": 90 PSI  
18": 75 PSI  
20" & 24": 60 PSI  
@ 70°F
- **Movement**  
Gear operator
- **Actuator Connection**  
14"-16" F12  
18"-24" F14

## Optional Features

- **Actuation**  
Electric actuation  
Pneumatic actuation

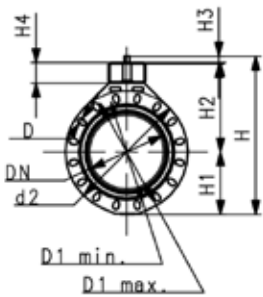
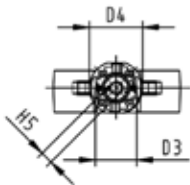
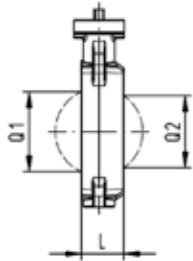
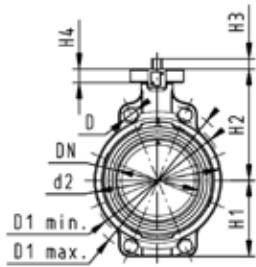
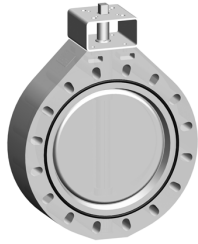


## General

The large diameter Type 567 butterfly valve from Georg Fisher is a continuation of the product line and uses the unique double eccentric off-center design. This means the disc is not in contact with the seal in the open position. The result is a valve that requires about half the torque of a traditional boot design, which also causes less wear on the disc seal. Both the disc and body are made of polypropylene allowing for excellent chemical compatibility with liquids ranging from simple water to a variety of chemicals.

Authorized Distributor:

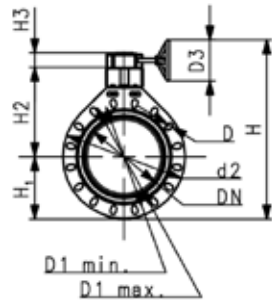
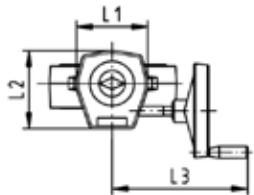
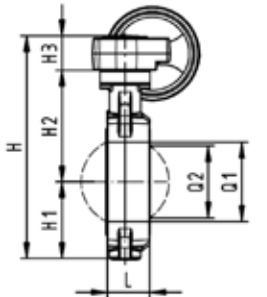
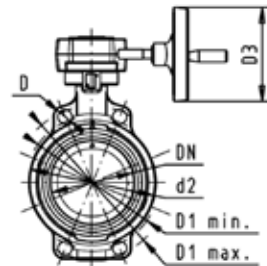
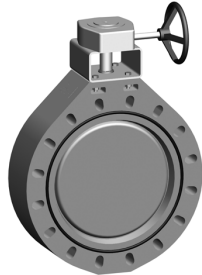
**Aetna Plastics Corp. 1702 St. Clair Ave. Cleveland, Ohio 44114 • Tel: 800-634-3074  
216-781-4421 • Fax: 216-781-4474 • sales@aetnaplastics.com • www.aetnaplastics.com**



## Type 567 Butterfly Valve PROGEF Standard Bare shaft

d [mm]	Size	PSI	EPDM Part No.	FPM Part No.
355	14	90	167 567 811	167 567 831
400	16	90	167 567 812	167 567 832
450	18	75	167 567 813	167 567 833
500	20	60	167 567 814	167 567 834
630	24	60	167 567 815	167 567 835

d [mm]	D [mm]	D1 min. [mm]	D1 max. [mm]	d2 [mm]	D3 [mm]	D4 [mm]	H1 [mm]	H2 [mm]	H3 [mm]	H4 [mm]	H5 [mm]	L [mm]	Q1 [mm]	Q2 [mm]
355	29	445	477	535	125	180	268	410	31	100	27	129	325	305
400	29	510	540	595	125	180	300	435	31	100	27	169	353	350
450	32	565	578	635	140	220	320	520	35	120	36	179	393	390
500	32	620	635	700	140	220	350	550	35	120	36	190	444	440
630	35	725	750	813	140	220	420	610	35	120	36	209	530	527

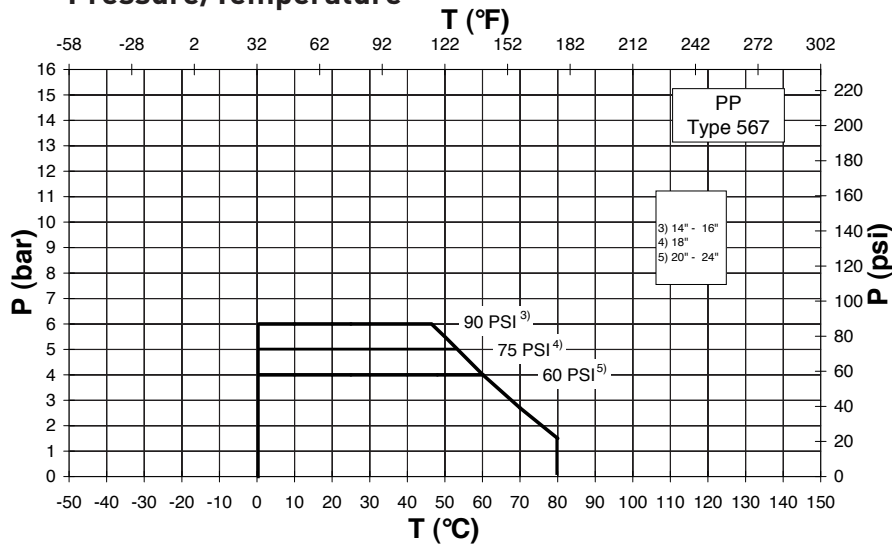


## Type 567 Butterfly Valve PROGEF Standard Reduction gear with handwheel

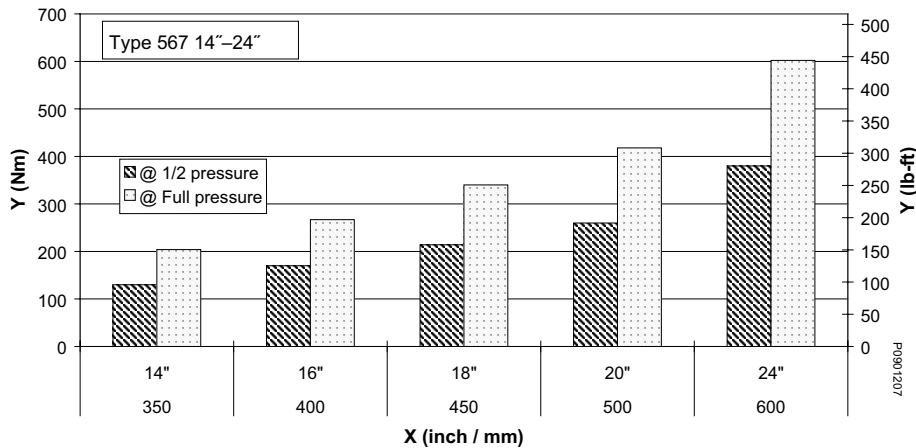
d [mm]	Size	PSI	EPDM Part No.	FPM Part No.
355	14	90	167 567 051 *	167 567 071 *
400	16	90	167 567 052 *	167 567 072 *
450	18	75	167 567 053 *	167 567 073 *
500	20	60	167 567 054 *	167 567 074 *
630	24	60	167 567 055 *	167 567 075 *

d [mm]	D [mm]	D1 min. [mm]	D1 max. [mm]	d2 [mm]	D3 [mm]	H1 [mm]	H2 [mm]	H3 [mm]	L [mm]	L1 [mm]	L2 [mm]	L3 [mm]	Q1 [mm]	Q2 [mm]
355	29	445	477	535	200	268	410	69	129	180	168	218	325	305
400	29	510	540	595	200	300	435	69	169	180	195	218	353	350
450	32	565	578	635	250	320	520	81	179	220	195	240	393	390
500	32	620	635	700	350	350	550	94	190	220	226	260	444	440
630	35	725	750	813	350	420	610	94	209	220	260	260	530	527

## Pressure/Temperature



## Torque



## kv100 values

DN mm	DN inch	d mm	kv 100 l/min (Δp=1 bar)	Cv 100 US gal./min (Δp=1 psi)	kv 100 m <sup>3</sup> /h (Δp=1 bar)
350	14	355	90000	6300	5400
400	16	400	115000	8050	6900
450	18	450	155000	10850	9300
500	20	500	204000	14280	12240
600	24	630	265000	18550	15900

## GF Piping Systems

2882 Dow Avenue, Tustin, CA 92780-7258

Tel. (714) 731-8800, Toll Free (800) 854-4090, Fax (714) 731-6201

e-mail: [us.ps@georgfischer.com](mailto:us.ps@georgfischer.com)

[www.gfpiping.com](http://www.gfpiping.com)

Authorized Distributor:

Aetna Plastics Corp. 1702 St. Clair Ave. Cleveland, Ohio 44114 • Tel: 800-634-3074  
216-781-4421 • Fax: 216-781-4474 • [sales@aetnoplastics.com](mailto:sales@aetnoplastics.com) • [www.aetnoplastics.com](http://www.aetnoplastics.com)