

Georg Fischer Type 567 & 568 with PTFE

Standard Features

- **Size**
2-12" (2"-8" Lug style)
- **Body 567**
Glass filled polypropylene compatible with ANSI and DIN flanges
- **Body 568**
Ductile iron epoxy powder coated ANSI 150 bolt pattern
- **Wetted Materials**
PVDF liner, PTFE disc seal, PTFE/FPM blend on other seals
- **Disc**
PVDF
- **Stem**
304 or 316 Stainless Steel (non-exposed)
- **Movement**
Lockable lever moves in increments of 5 degrees or available with gear operator

Optional Features

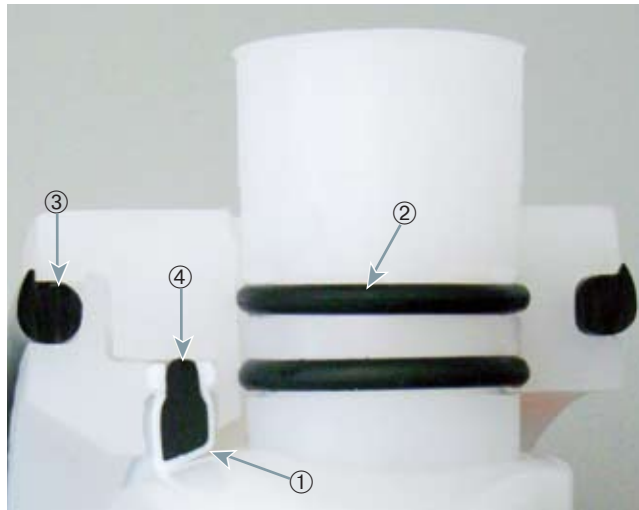
- **Actuation**
Electric actuation
Pneumatic actuation
- **Movement**
Fine adjustment lever allows disc to be opened at any angle from 0° to 90°
- **Hardware**
Teflon coated fasteners and springs



General

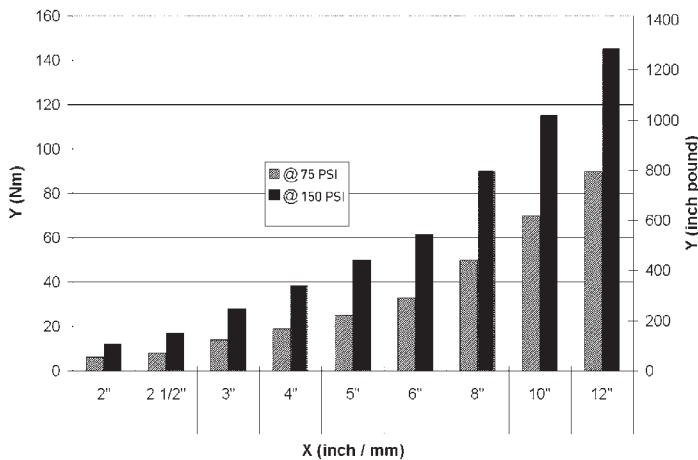
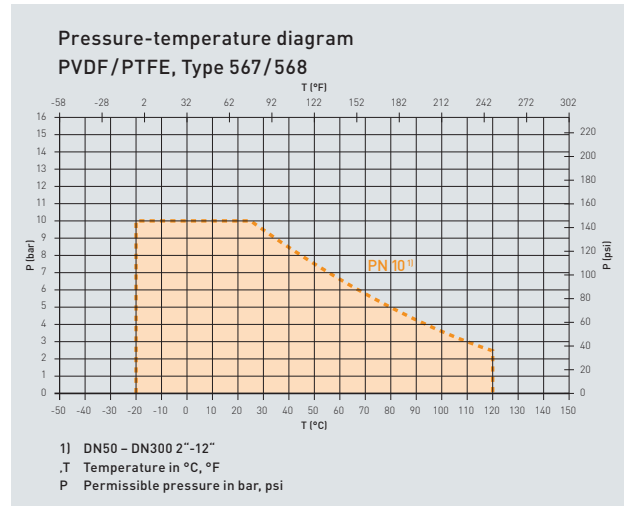
The 567 and 568 with a PVDF disc and liner and PTFE seals give users all the advantages of our standard butterfly valves with the additional benefits of increased chemical resistance and a wider temperature range. Operating temperature for the valve is -20° to 120°C (-4°F to 248°F). Like the standard 567 and 568, the valve incorporates the double eccentric off-center shaft design resulting in less wear and lower torque. The disc seal has an outer shell constructed of PTFE and an inner core of FPM creating a flexible, reliable seal. In addition, the valve better handles applications with degreasing media, due to the good dry-sliding properties of PTFE. The other seals in the valve are made of a FPM/PTFE blend with 15% PTFE. The 567 is wafer style and the 568 is lug style.

Georg Fischer Type 567 & 568 with PTFE



PTFE sealing concept for applications in the chemical process industry

- 1 - PTFE disc seal
- 2 - Shaft seal o-rings with PTFE blend
- 3 - Static FPM flange seal
- 4 - FPM core of disc seal

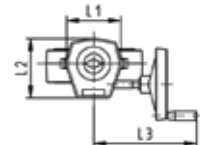
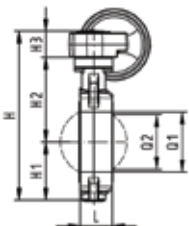
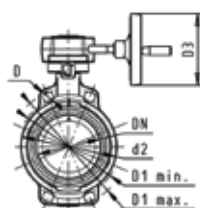
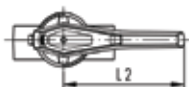
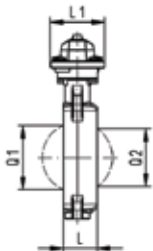
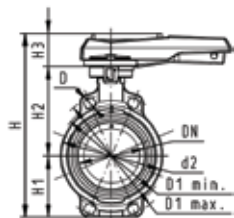
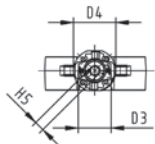
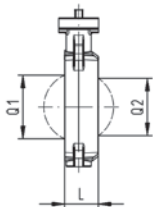
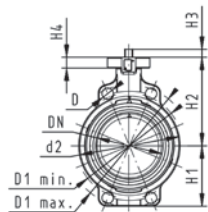


X Size DN (mm, inch)
Y Torque (inch pound)

Depending on the application, (e.g. operating speed, fluid, temperature, etc.), about 2 times the operating torque should be taken for actuators.

cv/kv 100 values

DN inch	DN mm	kv 100 l/min (Δp=1 bar)	Cv 100 US gal./min (Δp=1 psi)	kv 100 m ³ /H (Δp=1 bar)
2	50	175567842	175567202	175567222
2 1/2	65	175567843	175567203	175567223
3	80	175567844	175567204	175567224
4	100	175567845	175567205	175567225
5	125	175567846	175567206	175567226
6	150	175567847	175567207	175567227
8	200	175567848	175567208	175567228
10	250	175567849	175567209	175567229
12	300	175567850	175567210	175567230



Type 567 Bare shaft

Inch	psi	Cv-value	d	D	D1 min.	D1 max.	d2	D3	D4	H	H1	H2	H3	H4	H5	L
2	150	103	63	19	120.0	125.0	104	85.0	90.0	222	77	134	12	23	11	45
2½	150	154	75	19	139.7	145.0	115	85.0	90.0	235	83	140	12	23	11	46
3	150	210	90	19	150.0	160.0	131	85.0	90.0	247	89	146	12	23	11	49
4	150	455	110	19	175.0	195.0	161	85.0	90.0	287	104	167	16	23	14	56
5	150	805	140	23	210.0	215.9	187	85.0	90.0	313	117	181	16	23	14	64
6	150	1162	160	24	241.3	241.3	215	85.0	90.0	335	130	189	16	23	17	72
8	150	2772	225	23	290.0	295.0	267	85.0	90.0	387	158	210	19	23	17	73
10	150	3865	280	25	253.0	362.0	329	102	125	509	205	264	40	23	22	113
12	150	5600	315	25	400.0	432.0	379	102	125	553	228	285	40	23	22	113

Q1	d	Q2
35.74	63	
50.93	75	30.62
64.01	90	46.24
84.46	110	69.96
110.71	140	94.50
136.08	160	121.54
175.62	225	166.23
210	280	207
256	315	253

Type 567 with Hand Lever

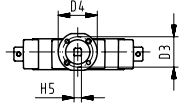
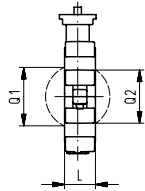
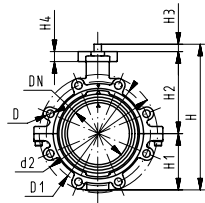
note: 10" and 12" max 90psi for safety

Inch	psi	Cv-value	d	D	D1 min.	D1 max.	d2	H	H1	H2	H3	L	L1	L2	Q1	Q2
2	150	103	63	19	120.0	125.0	104	264	77	134	54	45	106	205	35.74	
2½	150	154	75	19	139.7	145.0	115	277	83	140	54	46	106	205	50.93	30.60
3	150	210	90	19	150.0	160.0	131	289	89	146	54	49	106	205	64.01	46.24
4	150	455	110	19	175.0	190.5	161	325	104	167	55	56	106	255	84.46	69.96
5	150	805	140	19	210.0	215.9	187	352	117	181	55	64	106	255	110.71	94.50
6	150	1162	160	19	241.3	241.3	215	373	130	189	55	72	106	255	136.08	121.54
8	150	2772	225	19	290.0	295.0	267	435	158	210	67	73	140	408	175.62	166.23
10	150	3865	280	25	253.0	362.0	329	554	205	264	85	113	149	408	210	207
12	150	5600	315	25	400.0	432.0	379	598	228	285	85	113	149	408	256	253

Type 567 Gear Operator

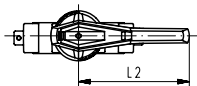
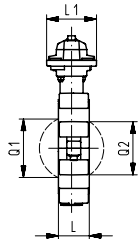
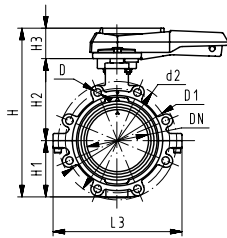
Inch	psi	Cv-value	d	D	D1 min.	D1 max.	d2	H	H1	H2	H3	L	L1	L2	L3
2	150	103	63	19	120.0	125.0	104	264	77	134	54	45	106	205	236
2½	150	154	75	19	139.7	145.0	115	277	83	140	54	46	106	205	236
3	150	210	90	19	150.0	160.0	131	289	89	146	54	49	106	205	236
4	150	455	110	19	175.0	190.5	161	325	104	167	55	56	106	255	236
5	150	805	140	19	210.0	215.9	187	352	117	181	55	64	106	255	236
6	150	1162	160	19	241.3	241.3	215	373	130	189	55	72	106	255	236
8	150	2772	225	19	290.0	295.0	267	435	158	210	67	73	140	408	236
10	150	3865	280	25	253.0	362.0	329	529	205	264	60	113	134	151	261
12	150	5600	315	25	400.0	432.0	379	573	228	285	60	113	134	151	261

Q1	Q2
35.74	
50.93	30.60
64.01	46.24
84.46	69.96
110.71	94.50
136.08	121.54
175.62	166.23
210	207
256	253



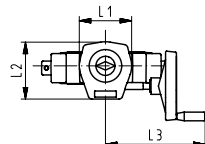
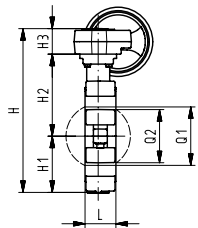
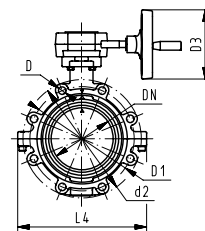
Type 568 Bare shaft

Inch	psi	Cv-value	d2	D	D1	D3	D4	H	H1	H2	H3	H4	L	Q1	Q2	H5
2	150	103	150	5/8	121	70	90	222	77	134	27	23	45	40		11
2½	150	154	170	5/8	138	70	90	235	83	140	27	23	46	54	35	11
3	150	210	177	5/8	152	70	90	247	89	146	27	23	49	67	50	11
4	150	455	216	5/8	191	70	90	287	104	167	16	23	56	88	74	14
5	150	805	246	3/4	216	70	90	313	117	181	16	23	64	113	97	14
6	150	1162	273	3/4	241	70	90	335	130	189	19	23	72	139	123	17
8	150	2772	334	3/4	298	70	90	387	158	210	19	23	73	178	169	17



Type 568 Bare shaft with Hand Lever

Inch	psi	Cv-value	d2	D	D1	H	H1	H2	H3	L	L1	L2	L3	Q1	Q2
2	150	103	150	5/8	121	265	77	134	54	45	106	205	150	40	
2½	150	154	170	5/8	138	277	83	140	54	46	106	205	160	54	35
3	150	210	177	5/8	152	289	89	146	54	49	106	205	175	67	50
4	150	455	216	5/8	191	326	104	167	55	56	106	255	244	88	74
5	150	805	246	3/4	216	353	117	181	55	64	106	255	272	113	97
6	150	1162	273	3/4	241	374	130	189	55	72	106	255	297	139	123
8	150	2772	334	3/4	298	435	158	210	67	73	140	408	360	178	169



Type 568 Bare shaft with Gear Operator

Inch	psi	Cv-value	d2	D	D1	D3	H	H1	H2	H3	L	L1	L2	L3	L4	Q1
2	150	103	150	5/8	121	160	279	77	134	68	45	120	132	236	150	40
2½	150	154	170	5/8	138	160	291	83	140	68	46	120	132	236	160	54
3	150	210	177	5/8	152	160	303	89	146	68	49	120	132	236	175	67
4	150	455	216	5/8	191	160	339	104	167	68	56	120	132	236	244	88
5	150	805	246	3/4	216	160	366	117	181	68	64	120	132	236	272	113
6	150	1162	273	3/4	241	160	387	130	189	68	72	120	132	236	297	139
8	150	2772	334	3/4	298	160	436	158	210	68	73	120	132	236	360	178

Georg Fischer Type 567 & 568 with PTFE

567 PVDF/PTFE

Inch	d mm	Bare Shaft Part No.	Part No. Lever	Part No. Gear	
2	63	175567842	175567202	175567222	
2 1/2	75	175567843	175567203	175567223	
3	90	175567844	175567204	175567224	
4	110	175567845	175567205	175567225	
5	140	175567846	175567206	175567226	
6	160	175567847	175567207	175567227	
8	225	175567848	175567208	175567228	
10	280	175567849	175567209	175567229	
12	315	175567850	175567210	175567230	



568 PVDF/PTFE

Inch	d mm	Bare Shaft Part No.	Part No. Lever	Part No. Gear	
2	63	175568942	175568302	175568322	
2 1/2	75	175568943	175568303	175568323	
3	90	175568944	175568304	175568324	
4	110	175568945	175568305	175568325	
5	140	175568946	175568306	175568326	
6	160	175568947	175568307	175568327	
8	225	175568948	175568308	175568328	



Authorized Distributor:

Aetna Plastics Corp. 1702 St. Clair Ave. Cleveland, Ohio 44114 • Tel: 800-634-3074
216-781-4421 • Fax: 216-781-4474 • sales@aetnaplastics.com • www.aetnaplastics.com