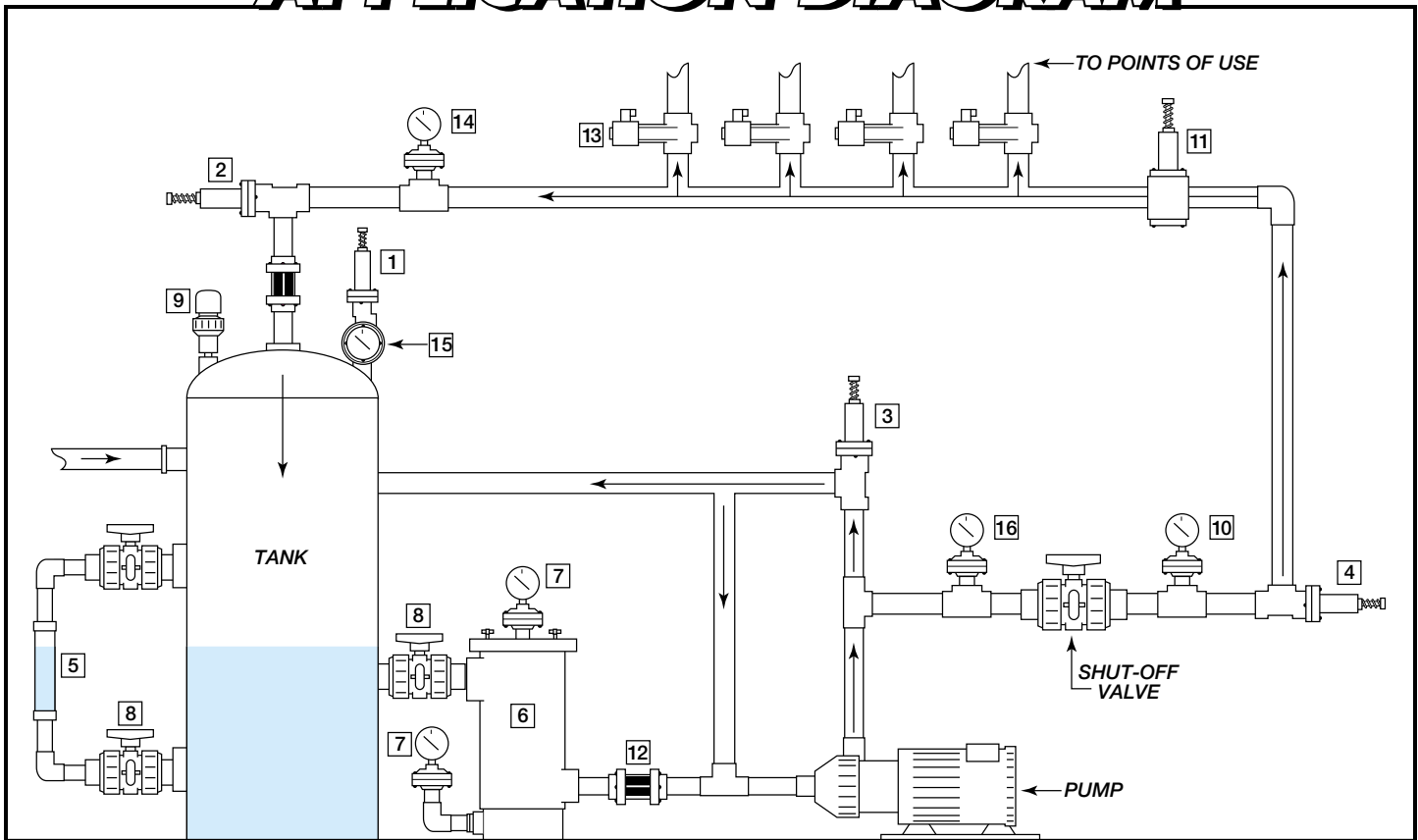


# APPLICATION DIAGRAM



- |  |  |
|--|--|
| <p><b>1 RVT – “Straight Relief”</b><br/>Protects a system (e.g. pump, pipe segment or tank) from excessive pressure (in excess of the set point).</p> <p><b>2 RVT – “Back Pressure Regulator”</b><br/>Provides a means of retaining desired system pressure to points in use in upstream lines.</p> <p><b>3 RVT – “By-Pass Relief”</b><br/>Protects a pump from “dead heading” by enabling the flow to by-pass an obstruction.</p> <p><b>4 RVT – “Back Pressure Valve”</b><br/>Provides back pressure directly on the discharge of a pump to enhance its performance.</p> <p><b>5 GL – “Level Indicator”</b></p> <p><b>6 VSTS/KST – “Basket Strainer”</b><br/>Protects pump and system from foreign matter.</p> <p><b>7 GGM (Vacuum) – “Gauge Guard”</b><br/>Determines when cleaning of basket strainer is necessary.</p> | <p><b>8 MBV – “Manual Ball Valve”</b><br/>Isolation valve for repair and cleaning.</p> <p><b>9 VBM – “Molded Vacuum Valve”</b><br/>Prevents tank collapse during empty cycle.</p> <p><b>10 GGM (Pressure) – “Gauge Guard”</b><br/>Verifies system pressure and <b>4</b> setting.</p> <p><b>11 PR – “Pressure Regulator”</b><br/>Assures pressure to points of use is not excessive.</p> <p><b>12 GY – “Flow Indicator”</b><br/>Verifies flow and strainer effectiveness.</p> <p><b>13 EAST – “Teflon Bellows Solenoid”</b><br/>Direct acting shutoff valve to points of use.</p> <p><b>14 GGM (Pressure) – “Gauge Guard”</b><br/>Verifies system pressure and <b>2</b> setting.</p> <p><b>15 GGM (Pressure) – “Gauge Guard” featuring Back Mount Gauge</b><br/>Verifies tank pressure and <b>1</b> setting.</p> <p><b>16 GGM (Pressure) – “Gauge Guard”</b><br/>Verifies system pressure and <b>3</b> setting.</p> |
|--|--|

Authorized Distributor:

Aetna Plastics Corp. 1702 St. Clair Ave. Cleveland, Ohio 44114 • Tel: 800-634-3074  
216-781-4421 • Fax: 216-781-4474 • sales@aetnaplastics.com • www.aetnaplastics.com