



PMD Series Pneumatic Actuators

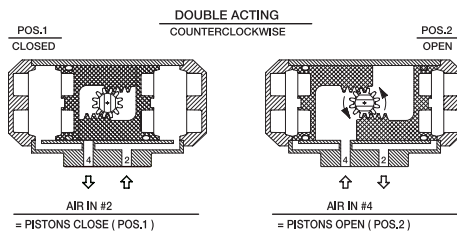
Double Acting



Overview

Low cost, heavy duty air-to-air (double acting) quarter-turn actuator for use with ball valves up to 2" in size. Corrosion-resistant construction is designed to stand up to harsh conditions without the need for epoxy coatings.

Actuator Operating Systems

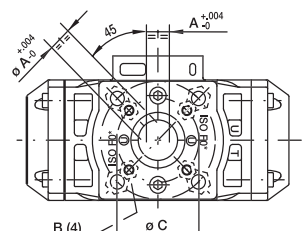
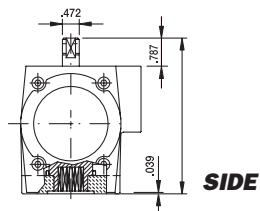
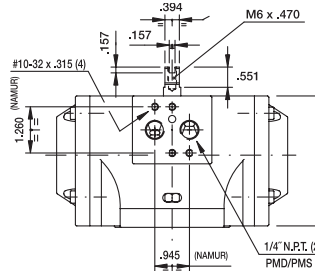
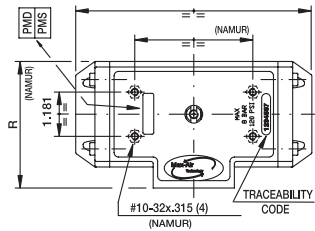


Features

- Plastic Housing
- Two-Piston Rack & Pinion Design
- Manual Override
- Position Indicator
- Permanent Lubrication
- Light Weight
- Stainless Steel Output Shaft
- Namur-Style Mounting

Options

- Solenoid Valves
- Solenoid Voltages
- Limit Switch
- Cycle Speed Controls



Dimensions-Inches

Model	øA	B	C	L	P	R
PMD	0.433 ISO F04	10-32x0.400 UNF-ISO F04	ø1.654 ISO F04	4.685	3.583	2.638

Actuator Specifications

Model	PMD10
Torque Output (in-lbs) @ 80 PSI	125
Enclosure Material	Polyarylamide
Output Shaft	Stainless Steel
Air Port Connections	1/4" NPT
Air Consumption (cu. in.)	13.5
Air Transfer	Internal
Stroke Time (seconds)	.5
Cycle Time	1/2 second
Minimum Air Pressure	80 PSI
Maximum Air Pressure	120 PSI
Operation	Rack and Pinion
Weight (lbs/kg)	1.3/.6

Valve Selection Chart

Size	True Union Ball Valve	Three-Way Ball Valve
1/4" - 2"	PMD10	PMD10



PMS Series Pneumatic Actuators

Spring Return



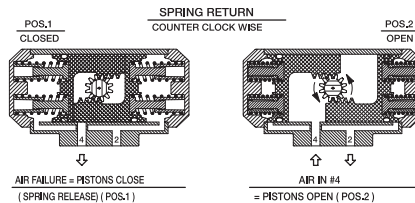
Overview

Lower cost, air-to-spring (fail-safe) quarter-turn actuator for use with all ball valves up to 2" in size. Heavy duty corrosion resistant plastic construction stands up to harsh conditions and a Namur-style modular mounting system makes it easy to add application-specific options.

Features

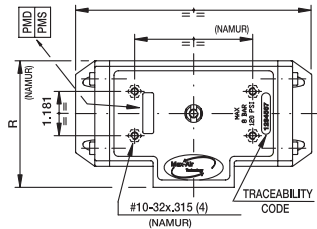
- Two-Piston Rack & Pinion Design
- Manual Override
- Position Indicator
- Permanent Lubrication
- Light Weight

Actuator Operating Systems

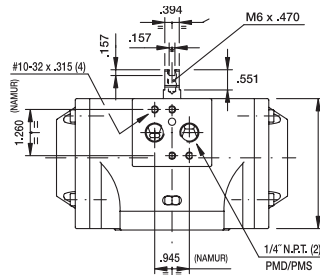


Options

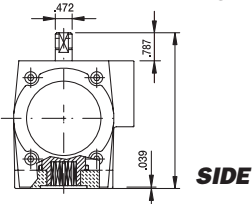
- Solenoid Valves
- Solenoid Voltages
- Limit Switch
- Cycle Speed Controls



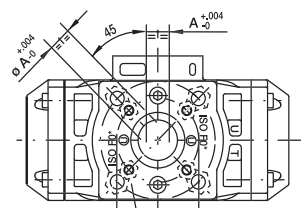
TOP



FRONT



SIDE



BOTTOM

Dimensions-Inches

Model	øA	B	C	L	P	R
PMS15	0.551	10-32x0.400	ø1.654	6.299	4.370	3.386
	ISO F04	UNF-ISO F04	ISO F04			

Actuator Specifications

Model	PMS15
Torque Output (in-lbs) @ 80 PSI	107
Enclosure Material	Polyarylamide
Output Shaft	Stainless Steel
Air Port Connections	1/4" NPT
Air Consumption (cu. in.)	10.8
Air Transfer	Internal
Stroke Time (seconds)	.5
Cycle Time	1/2 second
Minimum Air Pressure	80 PSI
Maximum Air Pressure	120 PSI
Operation	Rack and Pinion
Weight (lbs/kg)	3.1/1.4

Valve Selection Chart

Size	True Union Ball Valve	Three-Way Ball Valve
1/4" - 2"	PMS15	PMS15

PNEUMATIC ACTUATION

Authorized Distributor:

Aetna Plastics Corp. 1702 St. Clair Ave. Cleveland, Ohio 44114 • Tel: 800-634-3074
216-781-4421 • Fax: 216-781-4474 • sales@aetnaplastics.com • www.aetnaplastics.com