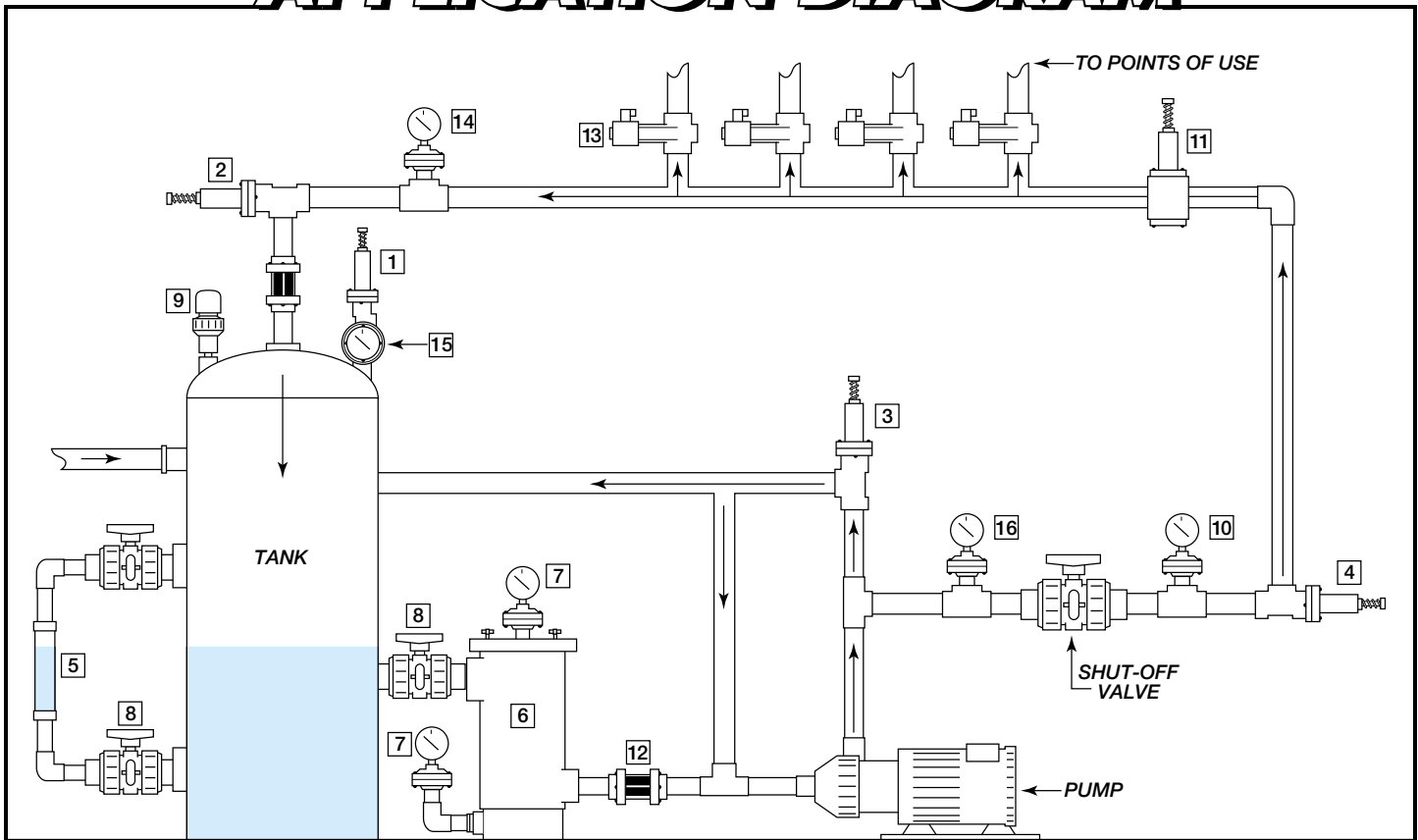


APPLICATION DIAGRAM



- | | |
|--|--|
| <p>1 RVT – “Straight Relief”
Protects a system (e.g. pump, pipe segment or tank) from excessive pressure (in excess of the set point).</p> <p>2 RVT – “Back Pressure Regulator”
Provides a means of retaining desired system pressure to points in use in upstream lines.</p> <p>3 RVT – “By-Pass Relief”
Protects a pump from “dead heading” by enabling the flow to by-pass an obstruction.</p> <p>4 RVT – “Back Pressure Valve”
Provides back pressure directly on the discharge of a pump to enhance its performance.</p> <p>5 GL – “Level Indicator”</p> <p>6 VSTS/KST – “Basket Strainer”
Protects pump and system from foreign matter.</p> <p>7 GGM (Vacuum) – “Gauge Guard”
Determines when cleaning of basket strainer is necessary.</p> | <p>8 MBV – “Manual Ball Valve”
Isolation valve for repair and cleaning.</p> <p>9 VBM – “Molded Vacuum Valve”
Prevents tank collapse during empty cycle.</p> <p>10 GGM (Pressure) – “Gauge Guard”
Verifies system pressure and 4 setting.</p> <p>11 PR – “Pressure Regulator”
Assures pressure to points of use is not excessive.</p> <p>12 GY – “Flow Indicator”
Verifies flow and strainer effectiveness.</p> <p>13 EAST – “Teflon Bellows Solenoid”
Direct acting shutoff valve to points of use.</p> <p>14 GGM (Pressure) – “Gauge Guard”
Verifies system pressure and 2 setting.</p> <p>15 GGM (Pressure) – “Gauge Guard” featuring Back Mount Gauge
Verifies tank pressure and 1 setting.</p> <p>16 GGM (Pressure) – “Gauge Guard”
Verifies system pressure and 3 setting.</p> |
|--|--|

Authorized Distributor:

Aetna Plastics Corp. 9075 Bank Street, Valley View, OH 44125 • Tel: 800-634-3074
216-781-4421 • Fax: 216-524-2280 • sales@aetnaplastics.com • www.aetnaplastics.com